



V1-X

The future of DAW controllers is here!
Extend the revolution!

Presenting the V1-X, the extender for the flagship V1-M DAW controller - featuring a beautifully designed meter bridge, 8 12-bit faders, 8 smooth action rotary encoders, 2 inch TFT displays, an additional LED displays and 32 illuminated buttons.

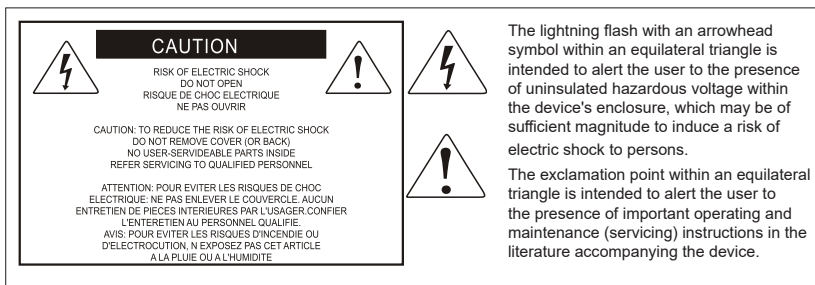
Combine your V1-X's and V1-M and enjoy 16 + channels of one of the most advanced recording systems in the world.



User manual



EN1630



Important Safety Instructions

1. Read this manual thoroughly before using this unit.
2. Keep this manual for future reference.
3. Take notice of and comply with all warnings included in the user's manual or indicated on the appliance.
4. Follow all instructions included in this manual.
5. Do not expose this unit to rain or moisture. Avoid having water or other liquids spilled on this unit.
6. When cleaning the cabinet or other parts of this appliance, use only a dry or slightly damp soft cloth.
7. Do not block any ventilation openings or interfere with the proper ventilation of this unit. Install in accordance with the manufacturer's instructions.
8. Do not use or store near any heat sources such as radiators, heat registers, stoves, or other heat-producing appliances.
9. Do not interfere with plugs in any way. Do not open the unit. ALWAYS consult an electrician for any proposed electrical work and NEVER attempt any remedial work yourself.
10. Protect the power cord from being walked on or otherwise damaged by items placed on or against them. Particular attention should be given to the plugs, receptacles, and the point where the cord exits the appliance.
11. To avoid the risk of electrical shock, do not touch any exposed wiring while the unit is in operation.
12. Only use attachments/accessories specified by the manufacturer.
13. Unplug this unit and all connected electrical equipment during lightning storms or when left unused for a long period of time.
14. Refer all servicing to qualified service personnel. Servicing is required when the appliance has been damaged in any way or fails to operate normally.

WARNING: To reduce the risk of fire or electric shock, do not expose this unit to rain or moisture

Contents

Introduction.....	4
What's in the package?	4
Register your ICON Pro Audio product to your personal account .	5
Features Pt. 1	6
Features Pt.2.....	7
Top Panel Layout	8
Top Panel Layout (cont.).....	9
Rear Panel Layout	11
Getting Started with the V1-X.....	12
Launching the V1-X in Every Day Use	15
Ableton Live	16
Audition.....	17
Bitwig.....	18
Cakewalk	19
Cubase/Nuendo	20
Digital Performer 11.....	21
FL Studio	22
Logic Pro	23
Luna.....	24
Mixbus 32C	25
Pro Tools.....	26
Reaper.....	27
Reason	29
Samplitude	31
Studio One.....	32
Tracktion Waveform.....	33
Installing iMap™ for the Mac	34
Installing iMap™ for Windows.....	35
The iMAP™.....	37
Other Functions in iMap™	39
Firmware upgrade	40
Hardware Connections	43
Expanding Even Further.....	44
Fitting your V1-X Extender	45
Specifications	46
Services.....	47

Introduction

Firstly, congratulations on your purchase of the ICON Pro Audio V1-X extender for the V1-M MIDI DAW controller! In these pages, you'll find a detailed description of the features of the V1-X and a full list of specifications.

Please register the product on our website at the link below

www.iconproaudio.com/registration

As with most electronic devices, we strongly recommend you retain the original packaging. In the unlikely event that the product is returned for servicing, the original packaging (or reasonable equivalent) is required. With proper care and adequate air circulation, your V1-X MIDI DAW controller will operate flawlessly for many years to come.

We trust that this product will provide years of excellent service and in the unlikely event that your product does not perform to the highest standard, every effort will be made to address the issue.

What's in the package?

- V1-X Extender unit
- Quick Start Guide x 1
- USB C Cable x 1
- Connector plugs x 2



Register your ICON Pro Audio product to your personal account

1. Check the serial number of your device

Please go to [http:// iconproaudio.com/registration](http://iconproaudio.com/registration) or scan the QR code below.



Input your device's serial number and the other information on the screen. Click "Submit".

A message will pop up showing your device information such as model name and its serial number - Click "Register this device to my account". If you see any other message, please contact our after-sales service team

2. Log in to your personal account page for existing users or sign up as a new user

Existing user: Please log into your User Center page by inputting your user name and password.

New user: Please click "Sign Up" and fill in all the information.

3. Download all useful materials

All your registered devices under your account will show on the page. Each product will be listed along with all its available files such as drivers, firmware, user manuals in different languages and bundled software etc. for download.

Features Pt. 1

The world of MIDI DAW controllers changed with the V1-M MIDI DAW controller.

This outstanding and let's be frank, beautiful machine will find its way to the heart of studio operations throughout the world, no matter the size or scope of the facility. Equally suited to full scale, state-of-the-art professional studios as it is to the project studio owner, never before has a DAW controller featuring this level of capability, value for money and expandability been available. It truly is a revolution in the world of DAW controllers.

Expanding the amount of channels of your V1-M system with the V1-X extender unit with 8 fresh new channels, brings you greater control and less banking through tracks.

The V1-X brings you 8 touch-sensitive, 12 bit motorized faders with beautifully designed fader caps, designed to ergonomically fit your finger for a more comfortable mixing experience.

The striking, modern meter bridge features 8 bright, clear accurate 12 segment LED meters and a super clear TFT display showing channel names, track values and channel colors (DAW dependent).

A lower 1.4 inch TFT display shows additional information for those DAWs capable of relaying this.

Your V1-X comes with 8 endless, smooth action rotary encoders, 32 illuminated buttons per channel, (rec, solo, mute and sel).

As with the V1-M, the V1-X features the super-stable Cortex-M7 @500 MHz ARM chip, which will ensure the machines will offer you reliability, durability along with ground breaking functionality for many years to come.

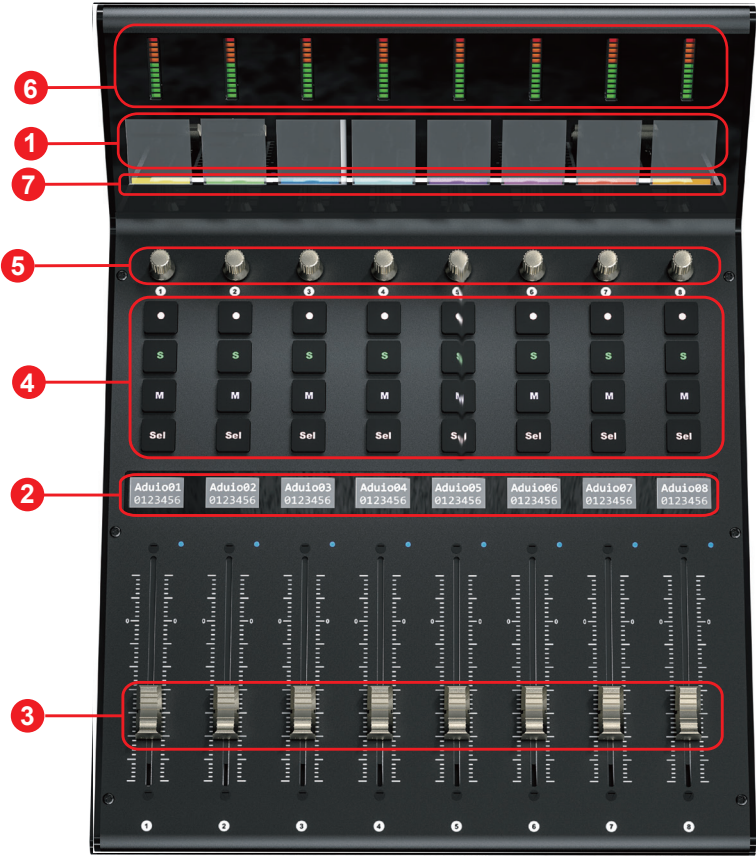
A highly advanced user-friendly generation of iMAP™ software supports the V1-X as well as the V1-M. Simply launch at the start of each session to ensure that commands such as 'Lock' not only apply to the main unit, but to the V1-X extender as well. This is because of the clever way that the iMAP acts as a bridge between the hardware and the computer. There is no secondary software to worry about, so no lag - the communication is super fast and changes are affected immediately.

The only question now is, just how many V1-X units to add to your V1-M!

Features Pt.2

- Functions as an extender for the iCON Pro Audio V1-M MIDI DAW controller
- 8x touch-sensitive motorized faders with 12-bit resolution
- Extremely hardwearing, durable and versatile
- On-board 2 inch TFT display showing channel name, control values, channel colors etc. (DAW dependent)
- Attractive, modern meter bridge featuring precise, clear and eye-catching LED meters
- Additional lower 1.14 inch TFT display for each channel (some DAW's are equipped to display additional information on this screen)
- 8 smooth action dual-function encoder knobs (Rotate and Enter)
- Illuminated buttons for channel control including Mute, Solo and Record
- Supports Universal Mackie Control and HUI protocols for seamless integration with compatible music production software
- Supports Ability, Audition, Ableton Live, Bitwig, Cakewalk, Cubase/Nuendo, Digital Performer, FL Studio, Mixbus 32C, Pro Tools, Logic Pro, Luna, Reaper, Reason, Samplitude, Studio One and Tracktion Waveform
- iMap™ software included
- USB C high-speed connectivity
- Firmware upgrade available via USB C connection and iMap™ software
- Superior build quality and robust metal casing with Kensington lock port
- Superb reliability with Cortex-M7 @500 MHz ARM chip

Top Panel Layout Diagram



Top Panel Layout (cont.)

NOTE: *The V1-X is a universal DAW controller (i.e. not designed for one specific DAW).*

Functions will operate slightly differently between DAWs. Please refer to your DAW manual for each function.

1. TFT Display

The generously proportioned 2 inch TFT on-board display shows the parameter values as you adjust them and also provides feedback about channel selections, operating modes, PAN values and more. The display is also capable of reflecting the color modes of the DAW channels. This is useful if you wish to group instrument tracks according to a certain color, i.e. guitar tracks as purple, drum tracks as yellow etc. The information displayed is dependent on the DAW.

2. On-board display

A second TFT 1.14 inch display of 8 windows, suitable for DAWs equipped to communicate information via a second display.

3. 8 channel Faders

The eight motorized faders are generally used for controlling the track volume of the DAW. Depending on your DAW, you may use the “Flip” button to swap the rotary encoders and the fader functions. This may be useful if making very intricate moves for PAN or plug-in parameter values commonly executed using the rotary encoders. The 12 bit resolution faders are capable of very detailed movement.

Any automation recorded in a project will be reflected by the fader positions. Any parameter adjustments made with the fader will be displayed directly above on the upper TFT display. All faders are touch sensitive and allow the user to override automation the moment a fader is touched.

4. Recording channel control buttons section

REC button - Activate and deactivate the recording state of the associated channel. The switch will light red when the channel is armed.

SOLO button - Activate/de-activate the solo state of the associated channel. The switch will light green when the channel solo state is on and other channels will be muted.

MUTE button - Activate and deactivate the mute state of the associated channel. The switch will light blue when the channel is muted.

SEL button - Used to select the channel

5. Knobs

The eight smooth, noiseless, endless rotary encoder knobs are generally used for controlling the track pan position, aux send levels and EQ of your DAW. You may also use them to adjust specific parameters within plug-ins and virtual instruments, (as your DAW software allows). The push-button action of the knob can be used to change modes of operation within the DAW (this is DAW dependent) and the rotating action of the knob can be used to change parameters of PAN, EQ, plug-in values etc.

6. Channel meters (mono)

Eight 12-segment LED meters showing the associated channel level.

7. Color display

Lower 'bar' display showing color modes of the DAW channels. This is useful if you wish to group instrument tracks according to a certain color, i.e. guitar tracks as purple, drum tracks as yellow etc.). *

* only a few DAWs support this at the moment.

Rear Panel Layout



1. USB C port

Functions as a MIDI port to your computer and compatible software.

2. 12V/2.5A power adapter port

Connect the power adaptor provided, here.

(Note: the V1-X is not able to work without the provided power adaptor connected. USB bus power from a computer is insufficient).

Getting Started with the V1-X



1. Connect the V1-X to your Mac/PC via the USB C port and select the system

Choose a USB port on your Mac/PC and insert the USB C cable. Connect the cable's other end to the V1-X.

When switching on for the first time, press down rotary encoder #4 (4th from left). Now, turn on the V1-X whilst pressing the encoder. This will launch the system selection interface on the V1-X's screen.

'Windows or Mac. Select your system.' will be displayed on the screen. Please select the relevant system and continue. You do not need to repeat this step unless you wish to change the system, (i.e. if you select Mac now, but wish to select Windows in the future).

2. Configure the 3x DAWs you wish to connect to

You will have already allocated 3x DAWs in the V1-M iMAP and assigned them to the 3x DAW buttons on the V1-M, (see the iMAP section of the V1-M manual).

These are the DAWs that are used as examples in the V1-M manual;

DAW #1	Bitwig
DAW #2	Cubase
DAW #3	Logic

For clarity purposes, we'll continue to use these examples in the following pages to demonstrate how you will configure the DAWs to the V1-X.

Firstly, let's get one thing very clear;

You do NOT need to allocate DAWs to the V1-X so that it recognizes which is DAW#1, DAW #2 is and so on. You've already set that up on the V1-M. This will be communicated to the V1-X. Please make sure you switch on your iMAP first at all times when using the V1-M/X system so that the V1-M will be able to communicate with the V1-X.

Now, you only have to ensure that the DAW programs know the V1-X and the V1-M are trying to communicate to them.

Read on to find out how.

When turning on for the 1st time



Press down the 4th rotary encoder and switch on the V1-M V1-X.



Select your system.

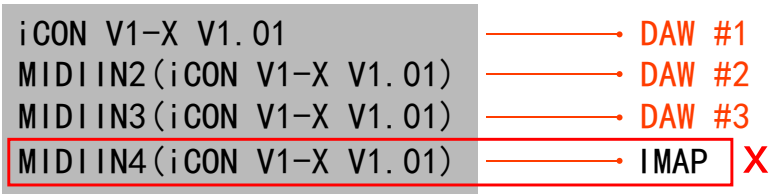


Press the corresponding button at the bottom of the screen according to the system you need to select.

Setting up the V1-X in the DAW

Since you will have allocated 3 DAWs within the V1-M iMAP, you will need to configure those DAWs so that the V1-X recognizes them and the DAW/s recognize the V1-X, along with the V1-M. This is done in the same way as the V1-M. In some DAW's you might add the V1-X as another instance of 'Mackie Control', in others you may need to add the V1-X as a 'Mackie extender'. Please refer to your DAW manufacturer's manual if in doubt.

This is the basic principle of how to add the V1-X extender;



Note: MIDI port 4 is used by the iCON Pro Audio software, iMAP™, to change the three DAWs you use, to update firmware and to program the 24 panel touchscreen with the functions of your choice on the V1-M.

These four options will appear as a menu from which you can select your chosen DAW.

So, remembering our examples from the V1-M manual;

DAW #1	Bitwig
DAW #2	Cubase
DAW #3	Logic

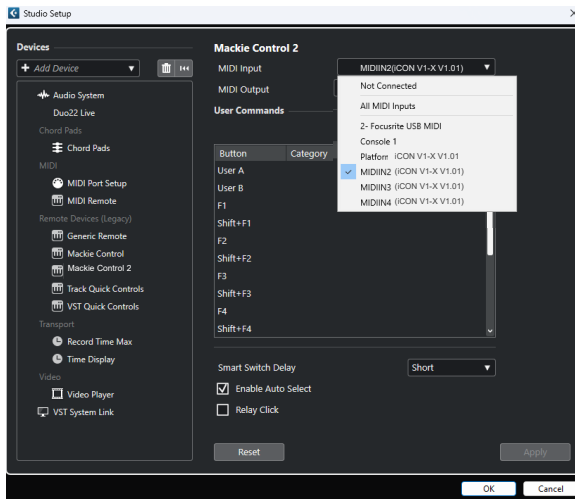
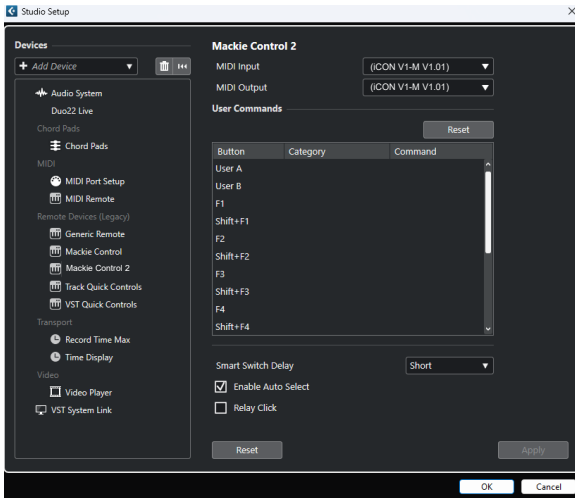
We know that we need to select 'V1-X V1.01' (or whichever firmware version it is*), in Bitwig because that is the DAW we have chosen to be DAW #1 on the V1-M. When you press DAW #1 on the V1-M unit, the VM-1 and V1-X will automatically go into Bitwig mode.

In our example, Cubase is our second DAW, so when we are configuring our DAW to work with the V1-X, we will need to select 'MIDI IN2 (V1-X V1.01)' (or whichever firmware version it is*) in the menu. When the V1-X is set up as a Mackie control device in Cubase, whenever we press '2' in the DAW Controller selection section on the V1-M, the V1-M and V1-X will automatically select Cubase.

The same applies for Logic, although this time we are going to select 'MIDI IN3 (V1-X V1.01)' (or whichever firmware version it is*) to automatically select this DAW.

**firmware versions are updated over time*

Here's an example of how it is set up in Cubase.



As you can see, when configuring the device as a Mackie controller, there is a choice of 4 possible options.

Because we have set up Cubase to respond to DAW control button '2' on the V1-M, we are going to select 'MIDIIN2 (V1-X V1.01)' when connecting the V1-X.

Please also note, (although this is specific to Cubase), that users should use Mackie Control in the usual way to set up their devices in Cubase 12 onwards and not Cubase's MIDI Remote Manager.

Regardless of the supported DAWs you are using, the principle will be largely the same.

Launching the V1-X in Every Day Use

Every time you use the V1-M and the V1-X extender unit/s, please launch the controller first, then the iMAP, then the DAW/s.

The iMAP communicates directly to the hardware only and does not communicate to other software - this ensures that the speed of communication is fast and unhampered by secondary factors.

The iMAP acts as a kind of 'bridge' between the V1-M main unit and any V1-X extenders you may be using and ensures cohesion. The 'Lock' function, when used in conjunction with a V1-X extender unit for example, will work as expected. If the iMAP is not connected, it won't.

Of course, if you are expecting to make any changes with the programming of functions, the iMAP will need to run concurrently with the V1-M hardware.

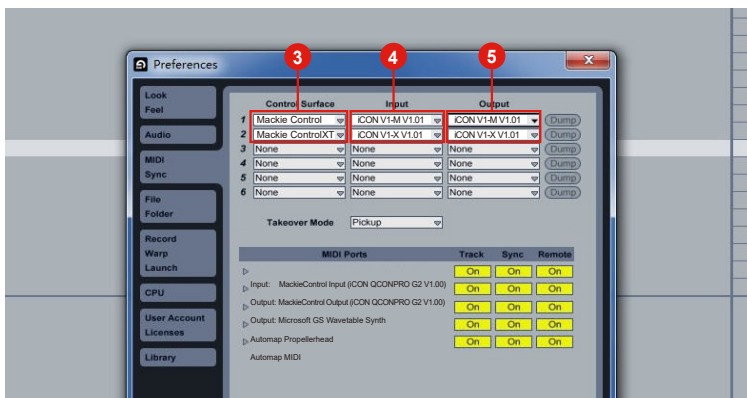
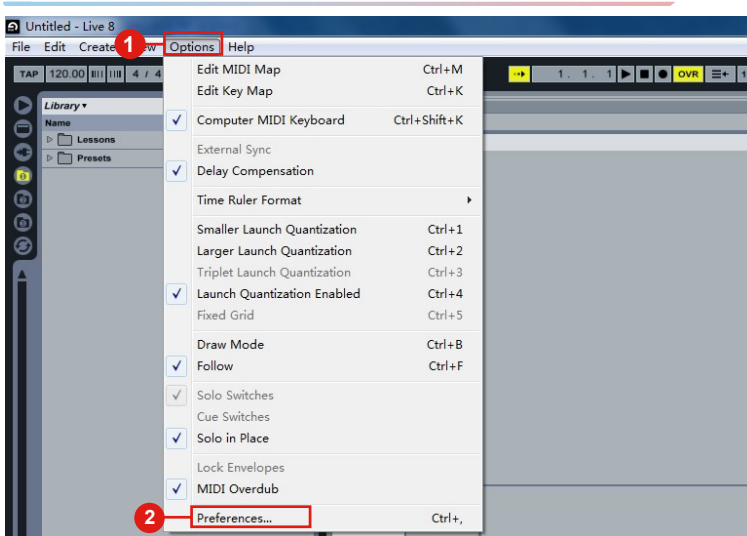
Lastly, the reason for using the sequence of Controller, iMAP, DAW is because MIDI port 4 is used by the iCON Pro Audio software, iMAP™, to change the three DAWs you use, to update firmware and to program the V1-M's 24-panel touchscreen with the functions of your choice. You cannot use this port to connect your device.

Unfortunately, some DAWs will automatically try to occupy Port 4 when launched and this will prevent the iMAP from functioning properly. The iMAP, therefore, needs to be turned on first to make sure it occupies that MIDI port.

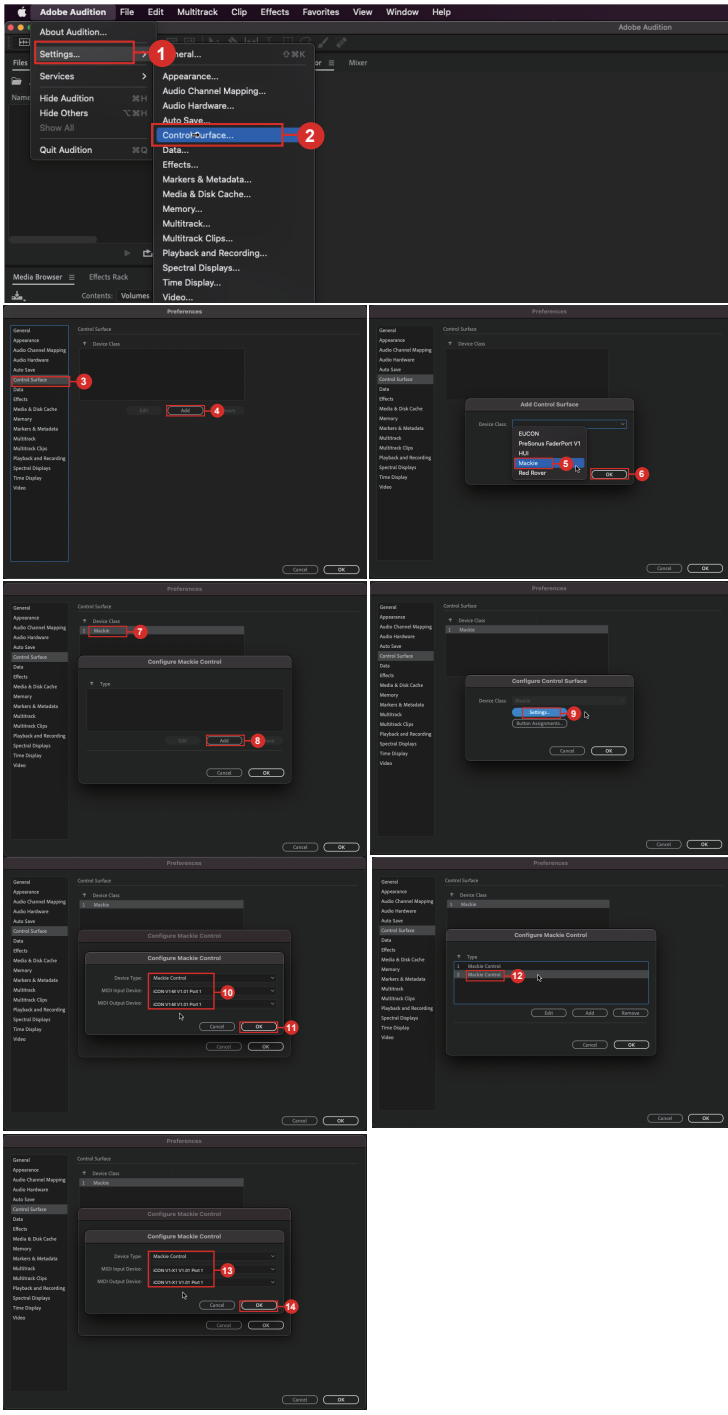


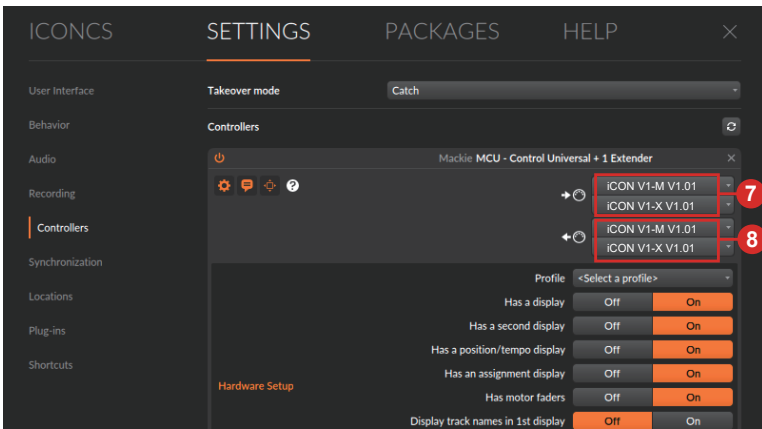
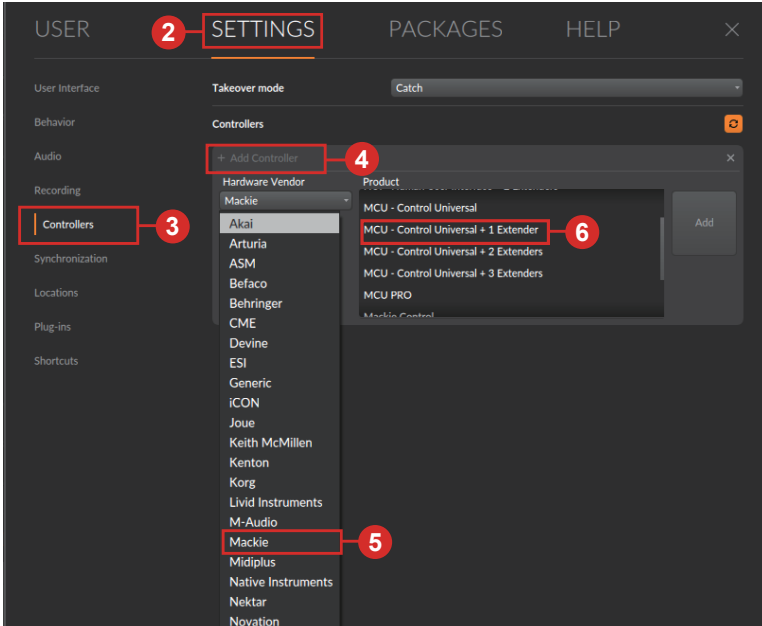
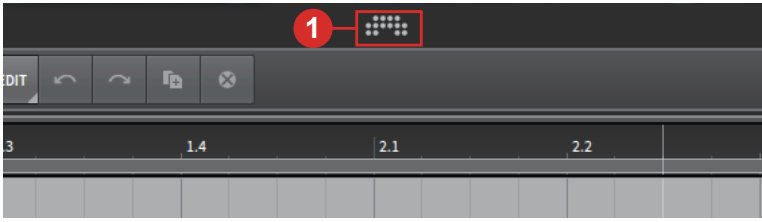
Remember
Every time you launch the V1-X

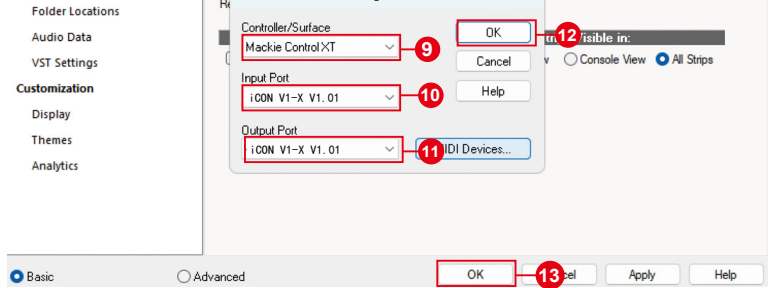
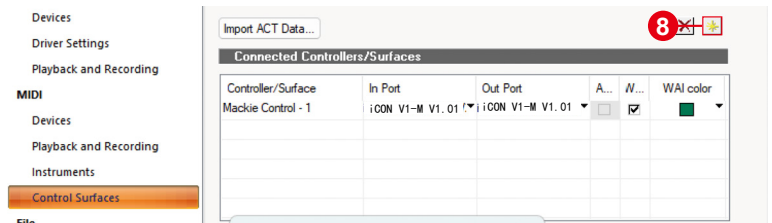
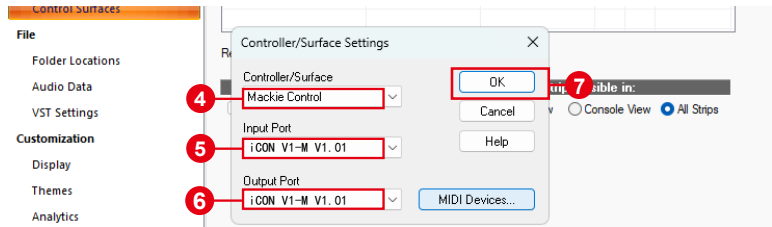
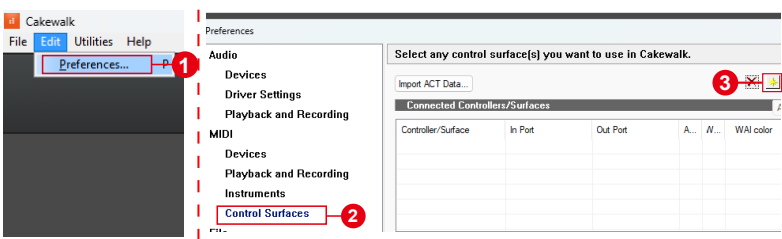
- Step 1: Controller**
- Step 2: iMAP**
- Step 3: DAW**



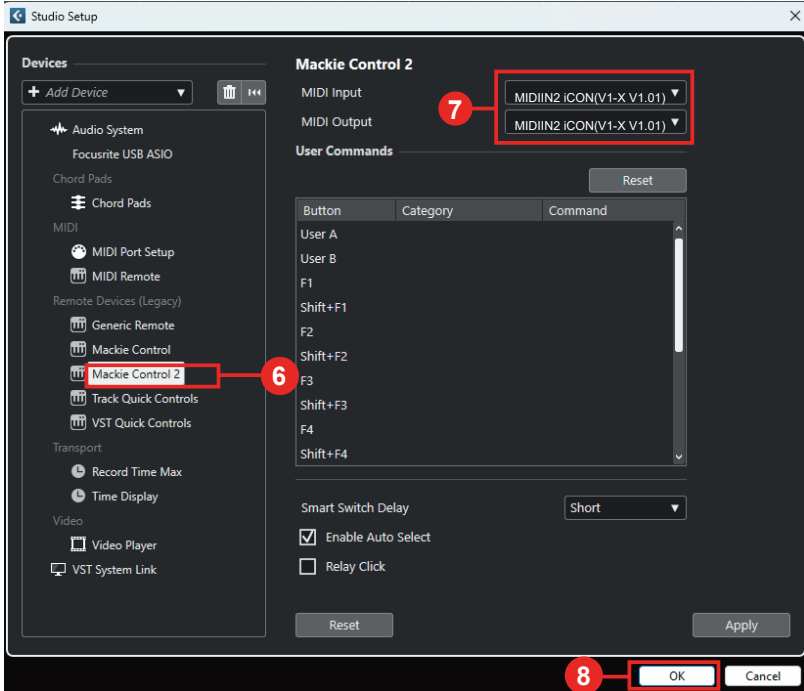
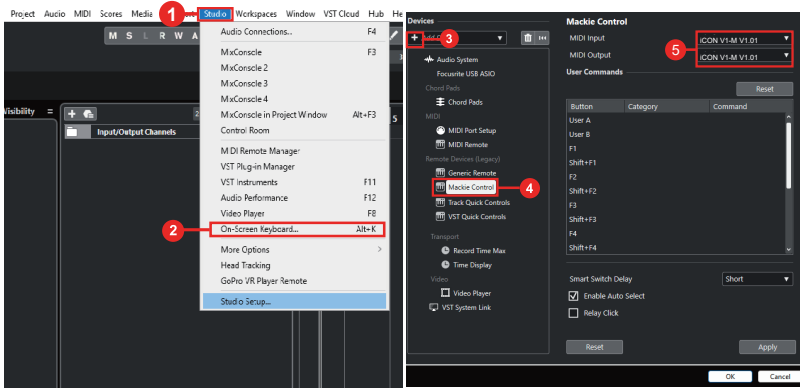
Audition





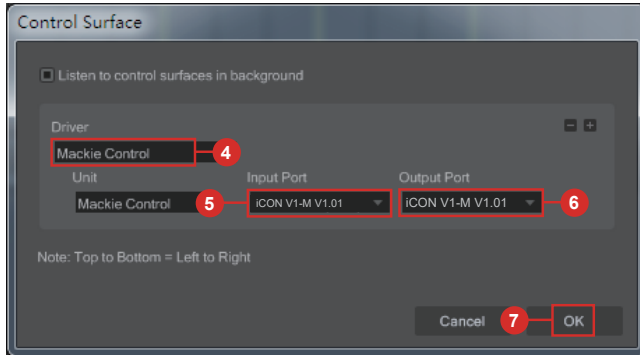
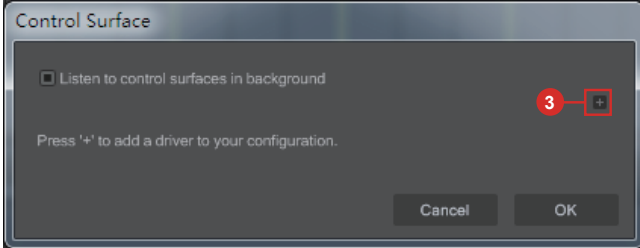
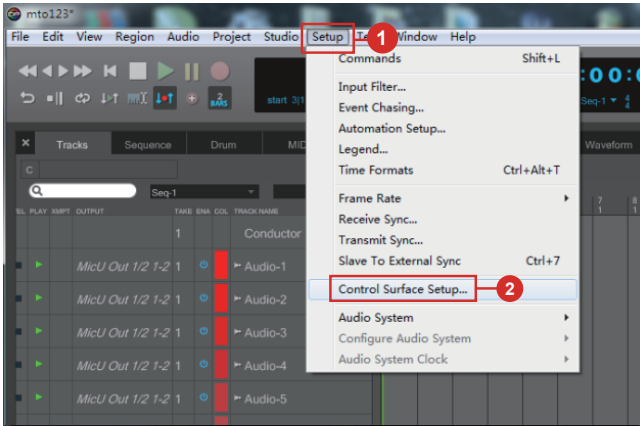


Cubase/Nuendo

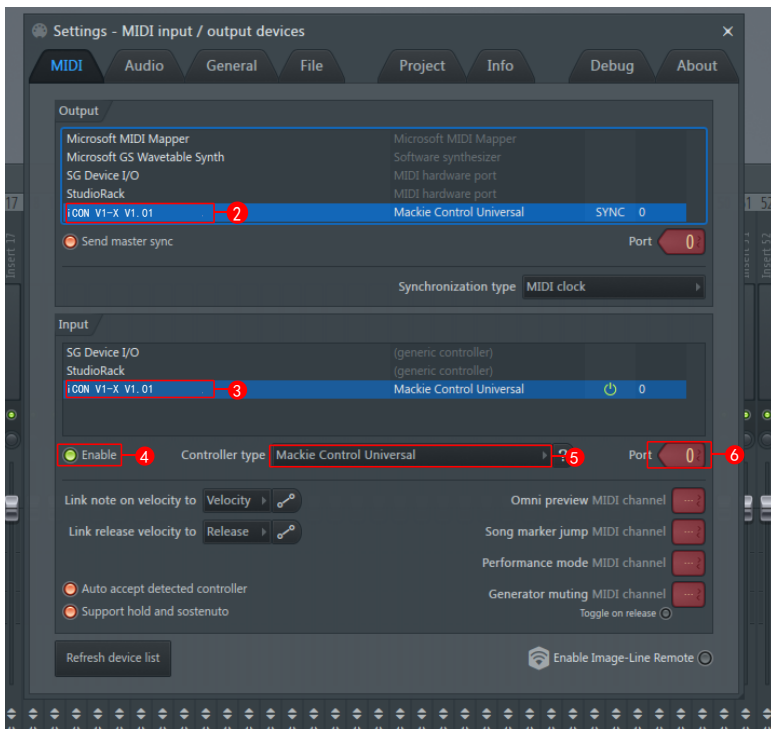
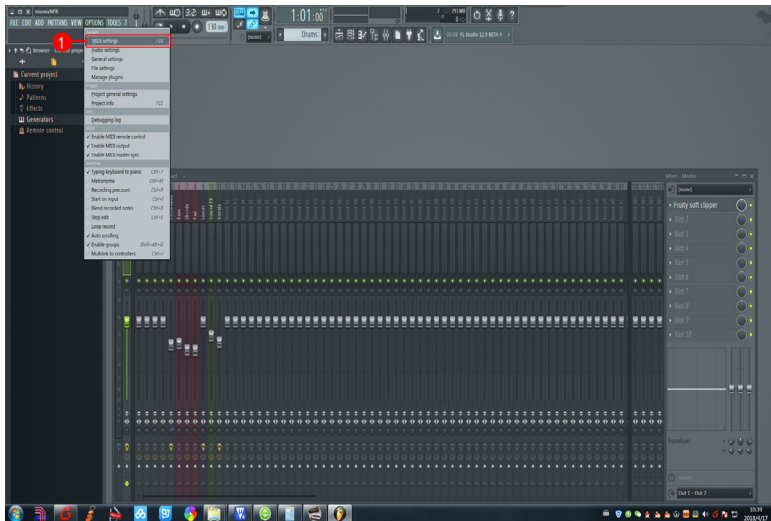


Digital Performer 11

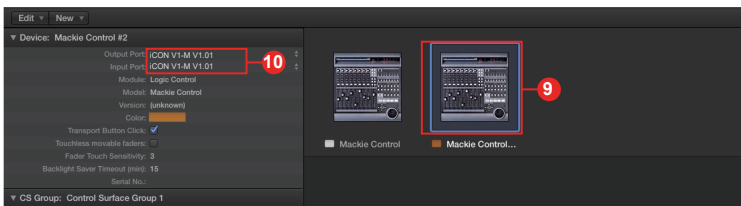
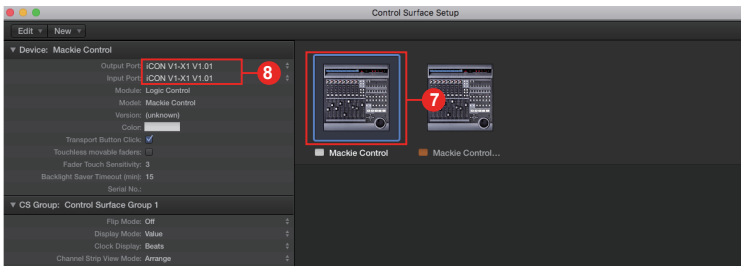
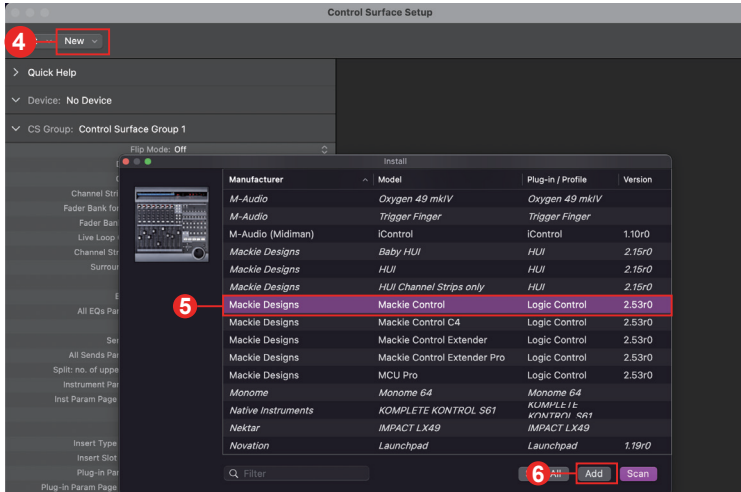
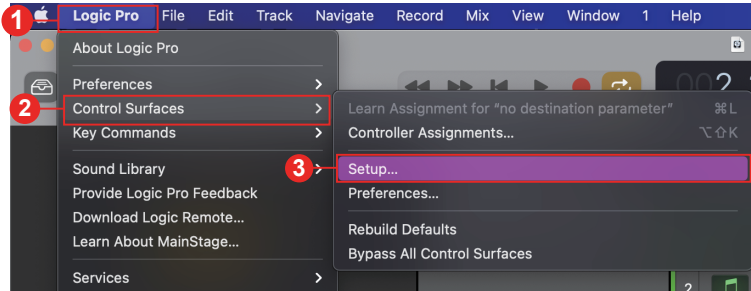
Digital Performer

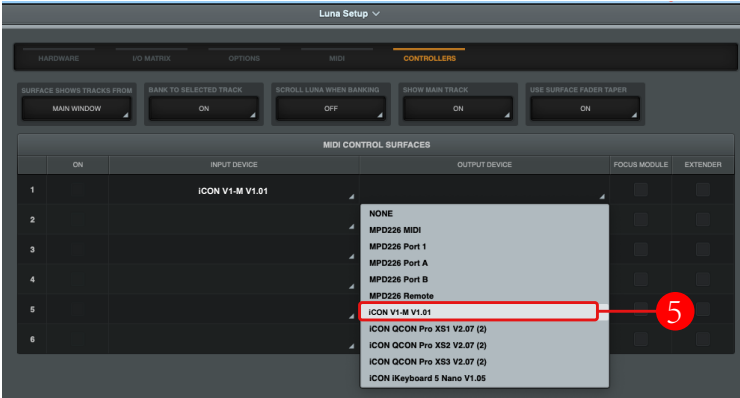
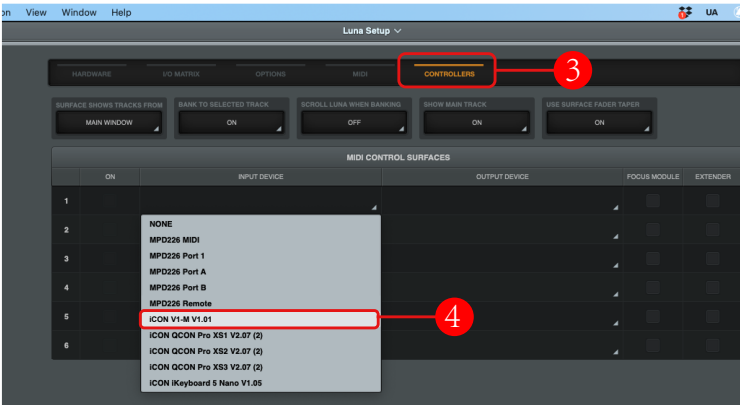


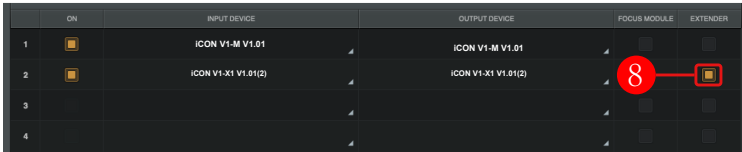
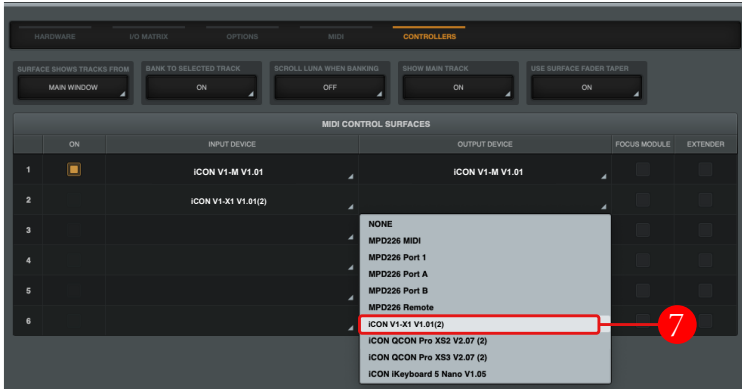
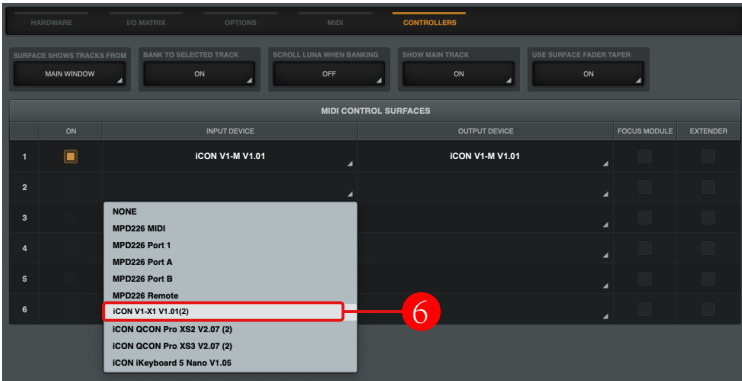
FL Studio



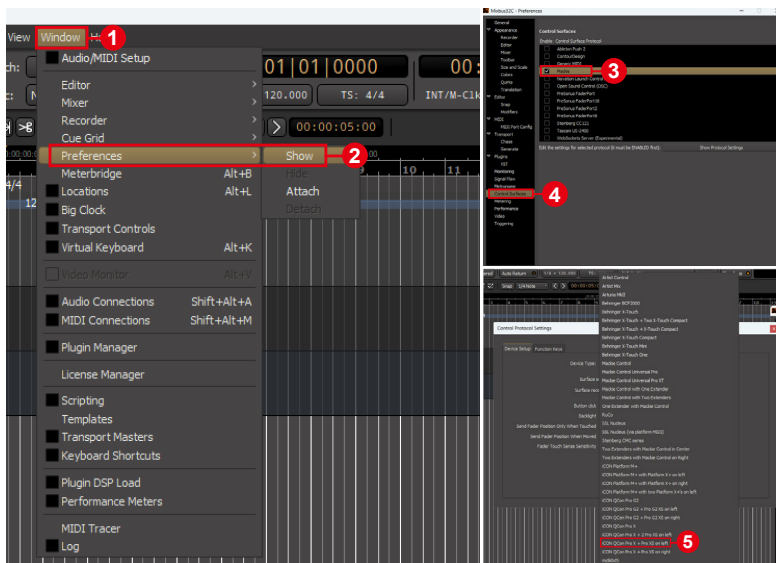
Logic Pro



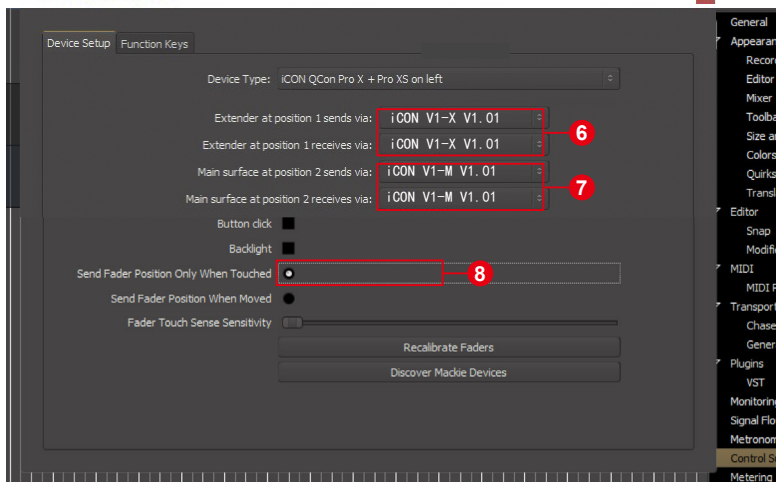




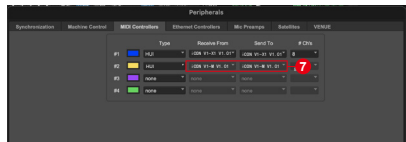
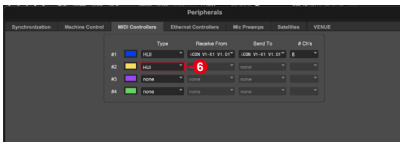
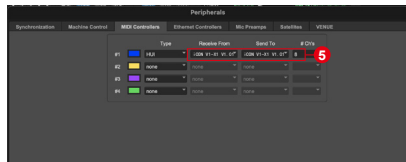
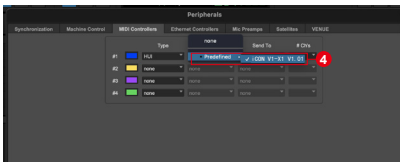
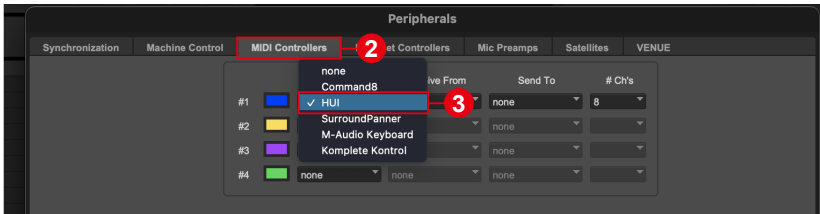
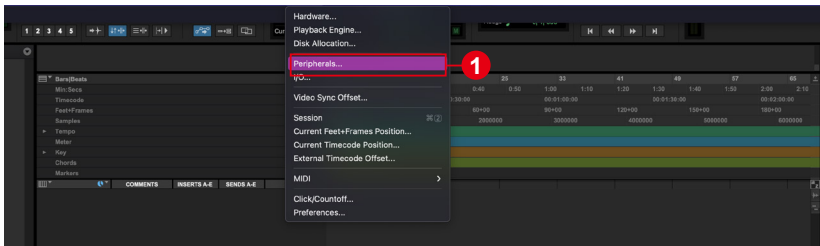
Mixbus 32C



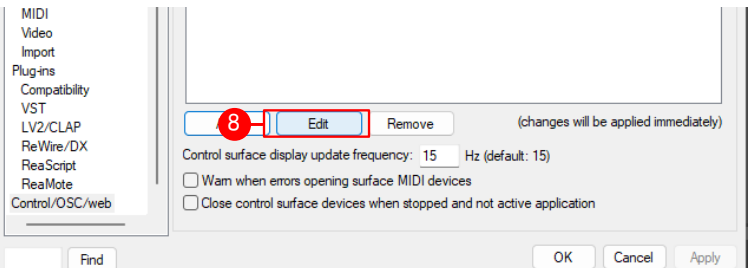
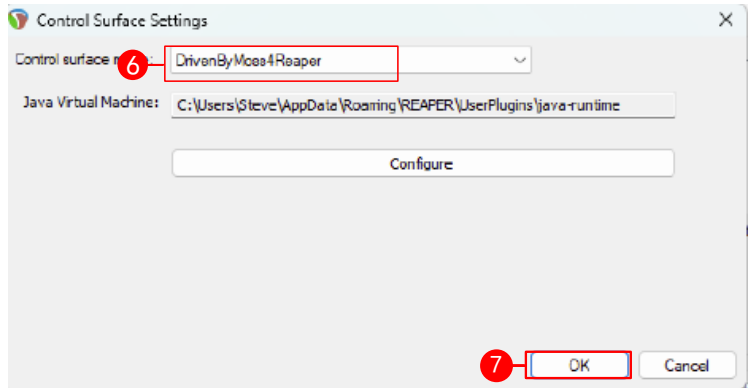
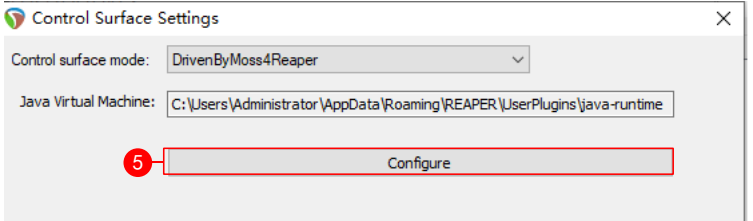
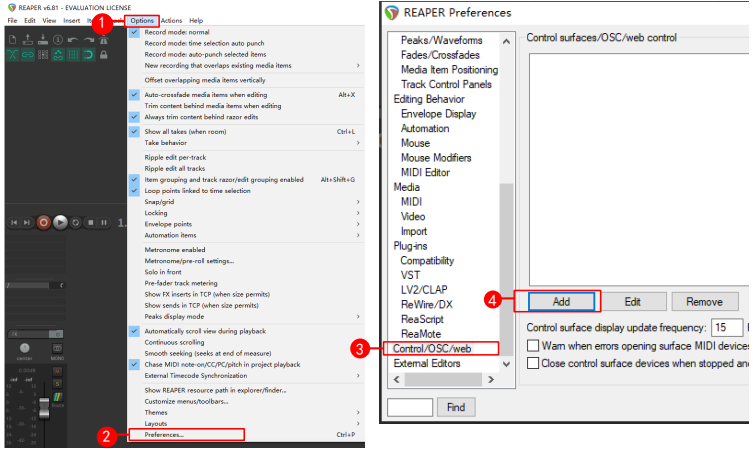
Control Protocol Settings

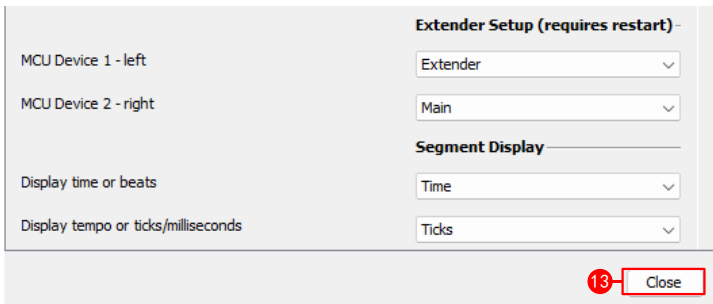
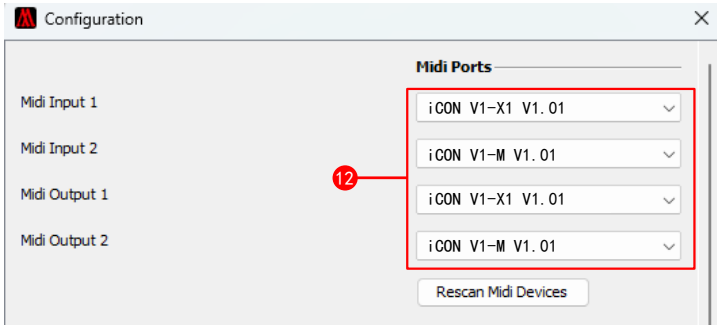
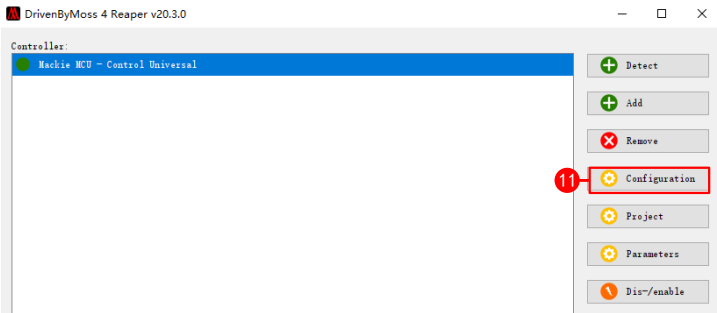
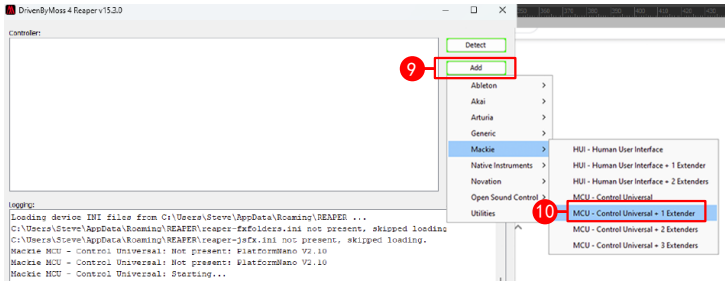


Pro Tools

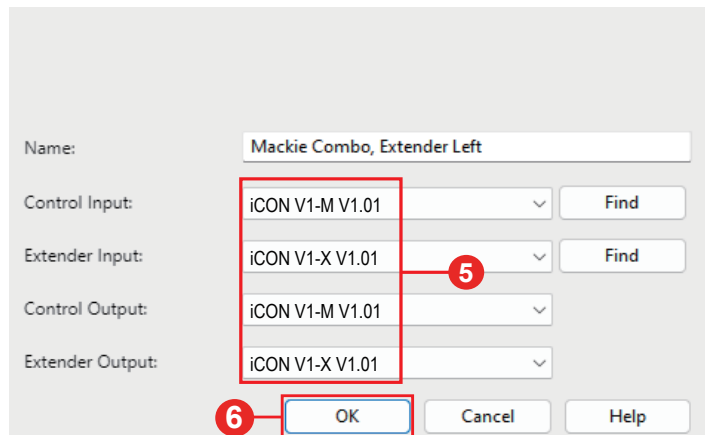
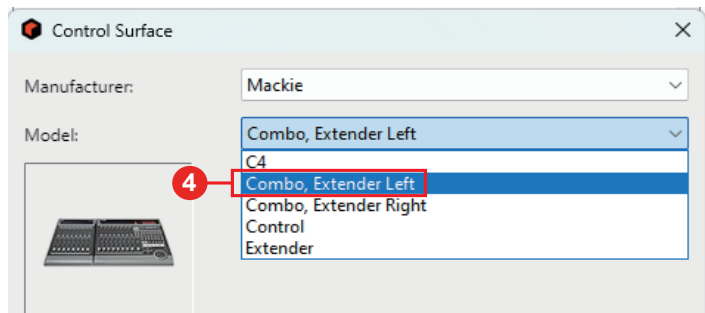
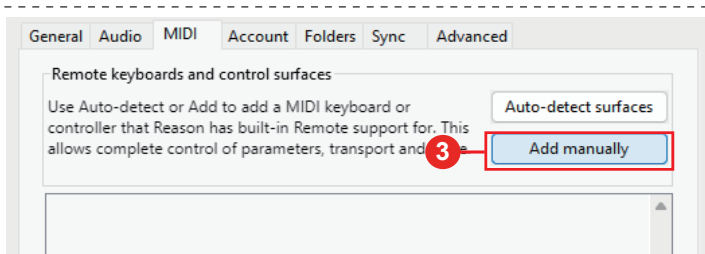
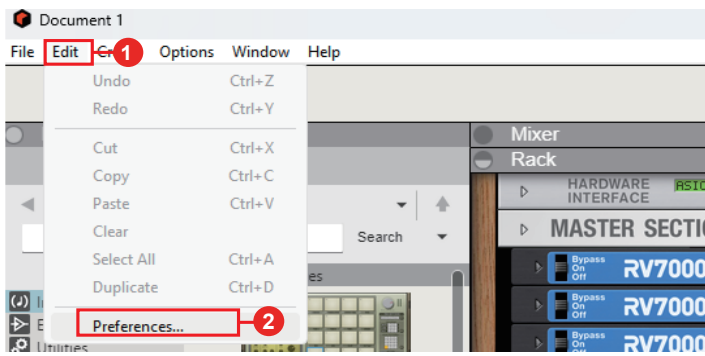


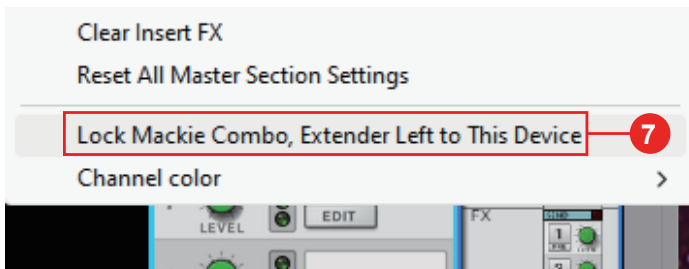
Reaper



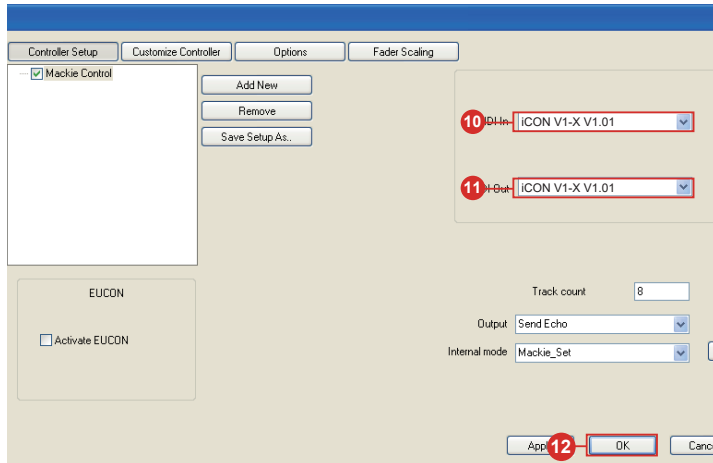
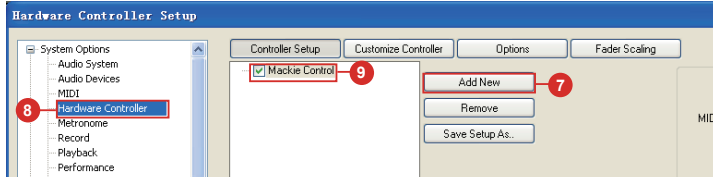
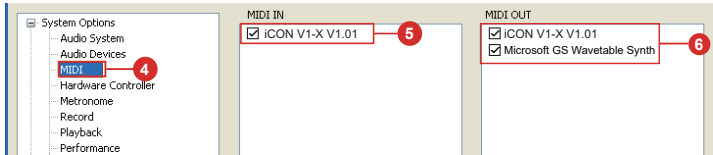
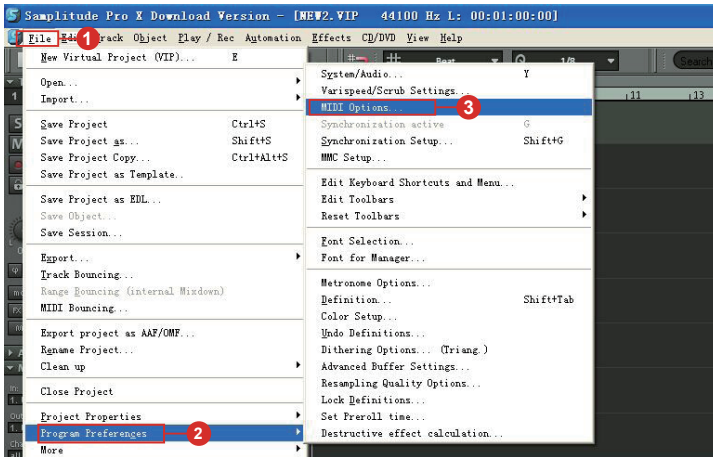


Reason

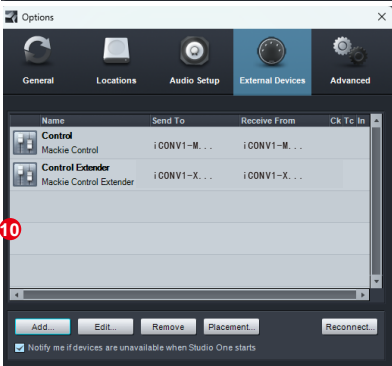
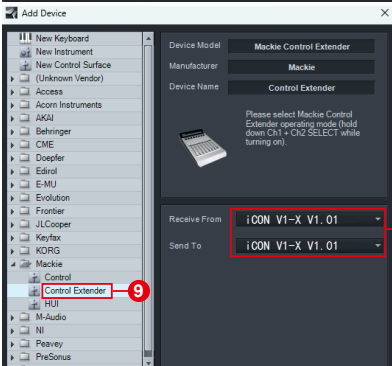
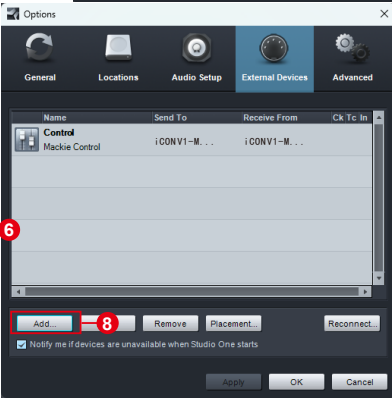
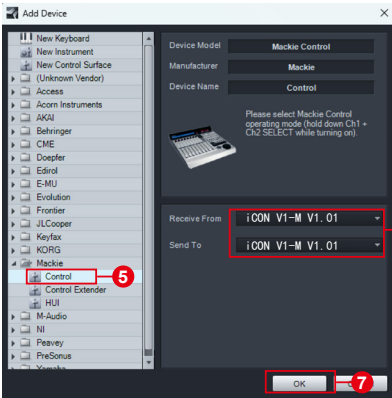
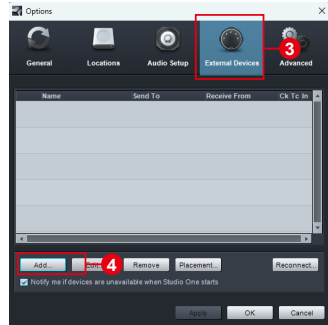
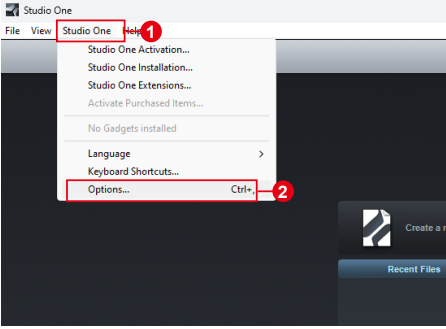




Samplitude



Studio One



Tracktion Waveform

1 Settings

MIDI Devices:

✓ Enabled	2- Focusrite USB MIDI	Output	Default MIDI output
✗ Disabled	Console 1	Output	
✓ Enabled	iCON V1-M V1. 01	Output	
✓ Enabled	iCON V1-X2 V1. 01	Output	
✓ Enabled	Microsoft GS Wavetable Synth	Output	
✓ Enabled	2- Focusrite USB MIDI	Input	Default MIDI input
✗ Disabled	Console 1	Input	
✓ Enabled	iCON V1-M V1. 01	Input	
✓ Enabled	iCON V1-X2 V1. 01	Input	

Create New Virtual MIDI Input... Refresh MIDI Device List

Use computer keyboard for MIDI input

Create New Custom Control Surface...

Mackie Control Universal

Extenders: 0

Input Device:

2

Settings

Arturia KeyLab	<No Device Selected>	<No Device Selected>
Behringer X Touch Compact	<No Device Selected>	<No Device Selected>
Behringer X Touch Mini	<No Device Selected>	<No Device Selected>
Behringer X Touch One	<No Device Selected>	<No Device Selected>
Frontier Design Group AlphaTrack	<No Device Selected>	<No Device Selected>
Frontier Design Group Transport	<No Device Selected>	<No Device Selected>
iCON QCON Pro G2	<No Device Selected>	<No Device Selected>
iCON QCON Pro X	<No Device Selected>	<No Device Selected>
Komplete Kontrol A	<No Device Selected>	<No Device Selected>
Komplete Kontrol M	<No Device Selected>	<No Device Selected>
Komplete Kontrol S	<No Device Selected>	<No Device Selected>
KORG nanoKONTROL 2	<No Device Selected>	<No Device Selected>
Mackie C4	<No Device Selected>	<No Device Selected>
Mackie Control Universal	iCON V1-M V1. 01	iCON V1-M V1. 01
Novation Automap Universal	<No Device Selected>	<No Device Selected>
Novation ReMOTE SL	<No Device Selected>	<No Device Selected>
PreSonus Faderport V2	<No Device Selected>	<No Device Selected>

Create New Custom Control Surface...

Mackie Control Universal

Extenders: 1

Main: 2

Input Device 1: iCON V1-M V1. 01

Input Device 2: iCON V1-X2 V1. 01

Output Device 1: iCON V1-M V1. 01

Output Device 2: iCON V1-X2 V1. 01

Colour Selection

3

4

5

Control Surfaces:

Enable MIDI control surface hardware. Control surfaces typically feature things like buttons, knobs, faders, and

Installing iMap™ for the Mac

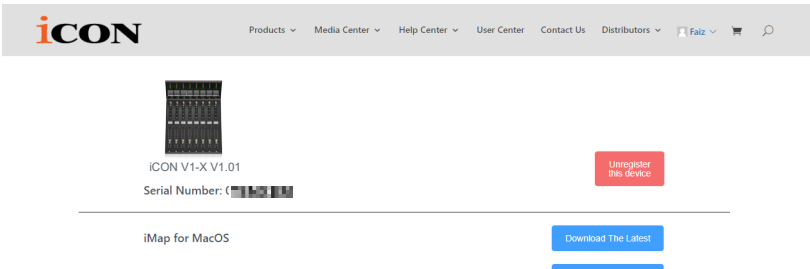
Please register your device and visit your Personal User Center at www.iconproaudio.com

After you downloaded the file, please click it to start the installation process.

The iMAP will also be available on the product page at www.iconproaudio.com

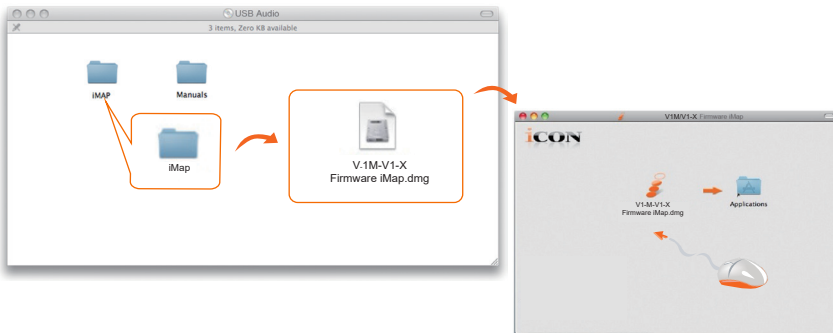
Tip: By “dragging and dropping” the “V1-M/X” icon into the “Applications” folder, you can create an “iMap” shortcut on your Mac’s desktop.

Note: There is one iMAP for both the V1-M and V1-X - you can swap between the two versions by clicking the “title”.



1. iMap™ Software

Please follow the procedures below, step-by-step, to launch your iMap™ software.



Installing iMap™ for Windows

Please register your device, visit your Personal User Center at www.iconproaudio.com and download the iMAP. iMAP is also available on the website www.iconproaudio.com

Please follow the procedures below step-by-step to install your iMap™ software.

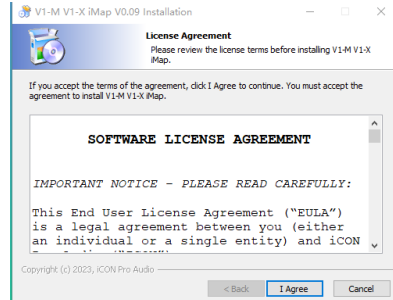
1. Turn on your PC.

2. Download the iMap from your User Center at www.iconproaudio.com

After you download the file, please click it to start the installation process.

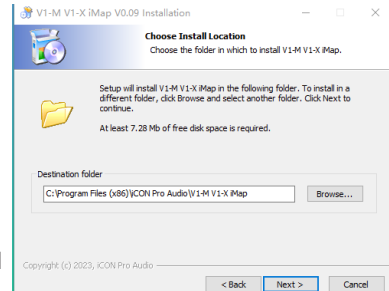
3. The Setup Wizard will appear

The setup wizard appears, please click 'I Agree' after reading the license terms.



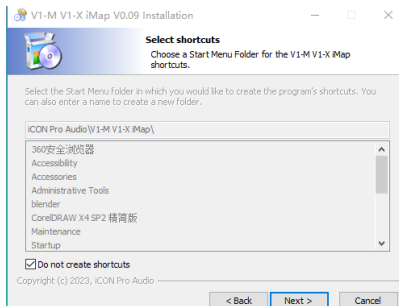
4. Choose Install Location

Choose your preferred install location for iMap™ or use the default location and click "Next".



5. Select shortcut

Select the start menu folder in which you would like to create the iMap™ shortcut. Then click "Next"



6. Create a shortcut on your desktop

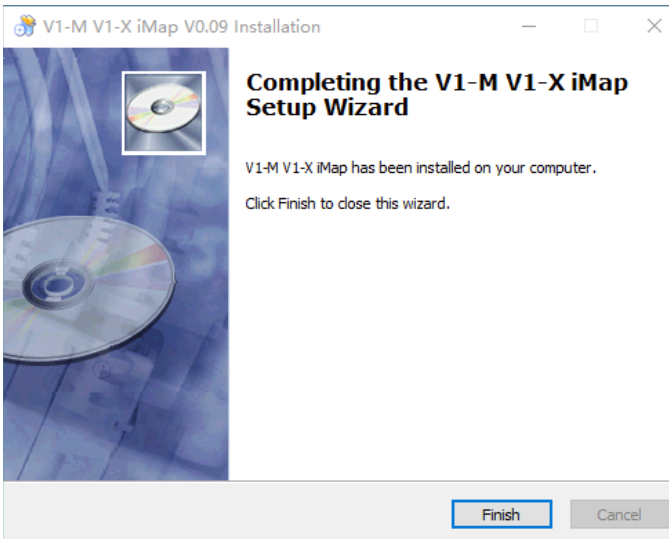
Please uncheck the box if you do not want to place a shortcut icon on your desktop for iMap™, otherwise click "Next".

7. iMap™ begins installation

Please wait for it to finish.
Then click “Finish”.

8. Installation finished

Click “Finish” to complete the iMap™ software installation.



The iMAP™

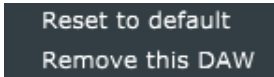


Sending your own MIDI messages

The intelligent design of the new, highly advanced iMap means that users can make changes in real time. Please note that you must click on the 'title' of the iMAP to change the controller you are programming. In order to change the programming of the V1-X select it in the drop- down box, (as pictured below).

You may adjust "Pitch", "Note", "CC", "Channel" and "Message" values for MCP and "Value 1", "Value 2" and "Function" for HUI, depending on the control element. The results will be transmitted to the V1-X instantaneously! Users may use the iMAP to program their own MIDI messages to both the faders and the rotary encoder, (buttons are covered by the touchscreen on the V1-M main unit – please see the manual for details).

On the iMAP, right-click the switchgear to 'Reset to default' values (i.e. the initial value of the current DAW mode you are in), if you decide you no longer wish to retain your MIDI mapping choices.



Please note that when using 'Bitwig,' right-clicking on any encoder and selecting 'restore to default' will result in all switchgear, (and the touchscreen on the main unit) reverting to their initial values.

Equally, selecting an alternative DAW (DAW buttons 1-3) will 'overwrite' any user programming to that of the selected DAW.



Using Virtual Instruments

Some users like to use DAW controllers to control the parameters of Virtual Instruments. It must be noted from the outset that this is entirely DAW and Virtual Instrument-dependent. Some Virtual Instruments have limited (and sometimes no) functionality.

There are various CC values that can be programmed i.e. CC1 (Modulation) and CC11 (Expression) are the most commonly used parameters).

Please note that 'vibrato' has no CC value and, should that parameter be a feature of a Virtual instrument you would like to control, you may be able to map it via MIDI learn. MIDI learn instructions can be found in the manual for your DAW.

Please note that some virtual instruments have limited capability in respect of receiving communication from generic or universal external controllers.

*Please also note that the jog wheel on the V1-M can be used as a parameter controller of plug ins, EQs and instruments, **without** having to program it especially, by pressing the 'focus' button and hovering with your mouse over the parameter in question. This is a potentially extremely useful and powerful feature and very simple and easy to use! It's definitely one to remember!*



Other Functions in iMap™



1. “Save file” button

Click this button to save your current settings for the V1-X. The file is an “.imap” file.

2. “Load file” button

Click this button to load a previously saved “.imap” setting file for your V1-X.

3. “Firmware Upgrade” button

Click this button to enter into the firmware upgrade window for V1-X. Please refer to the firmware upgrade procedure, which follows.

Firmware upgrade

V1-X functional firmware upload procedure

IMPORTANT: CLICK THE "TITLE" OF THE IMap TO SWAP BETWEEN THE V1-M AND V1-X VERSIONS. **ALWAYS** CHECK YOU ARE UPGRADING FIRMWARE FOR THE CORRECT DEVICE.



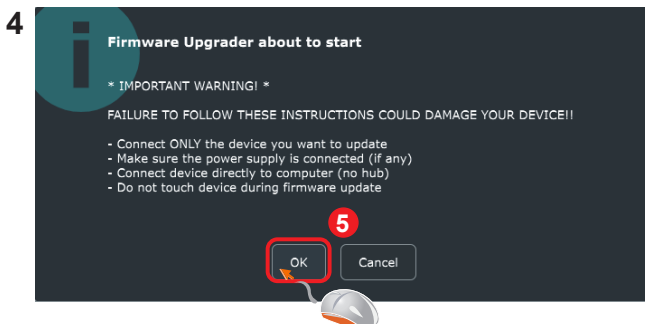
Warning: The firmware upload process **MUST** be completed and not interrupted during the file upload, otherwise the firmware may not be rewritten again.

Step1: Connect the V1-X using a USB C connection. Ensure the latest iMAP is downloaded from the website and installed, (check to make sure your iMAP is up to date!). Run the iMAP.

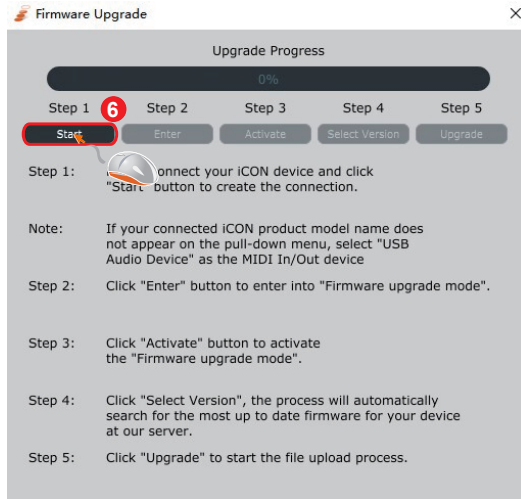
Click 'Firmware update'.



Step 2: Read the warning notice.



Step 3: Click the "Start" button.

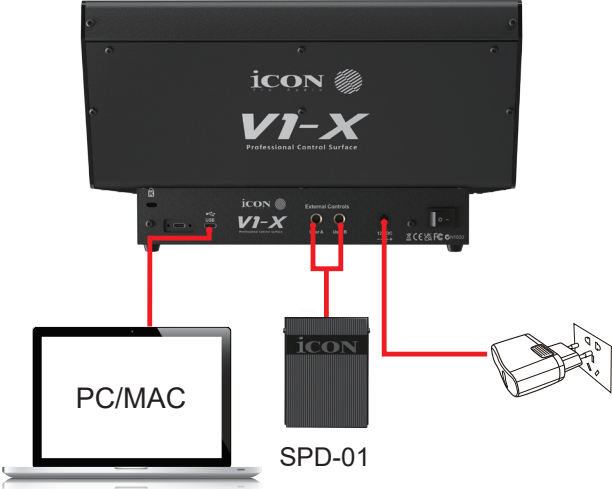


Step 4: Allow the firmware upgrade process to complete.

Step 5: Press 'ok' once the firmware update has been completed.



Hardware Connections



Expanding Even Further

The V1-M is one of the most advanced MIDI controllers in the world today and will serve you extremely well in the years ahead.

Now, you have expanded your system from 8 faders to 16 or even more, (DAW dependent) with the V1-X.

However, the V1-X gives you all the functionality you need to expand beyond 16 channels for some DAWs!

With 8 12 bit faders, 4 illuminated buttons per channel, 8 endless smooth action rotary encoders, together with a beautifully designed meter-bridge with accurate, LED meters and a 2 inch TFT display, the V1-X will enhance and heighten your mixing or recording experience.

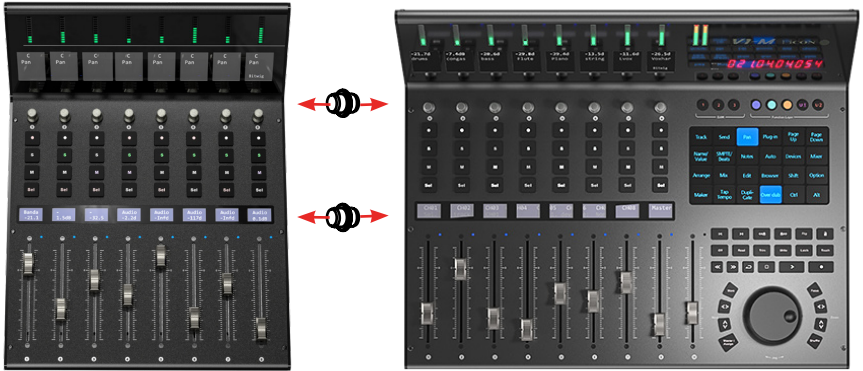


Fitting your V1-X Extender

Every V1-X unit comes equipped with two magnetic pegs which fit into the ports at the side of the V1-M unit, (either side).

The other side of the peg can then be inserted into the ports on the side of the V1-X unit. Thus, the two units sit together snugly, connected by a magnetic peg.

See below for a diagram.



Specifications

Connector:	To computer	USB C connector
Power supply:		12V/2.5A DC
Current consumption:		2A or less
Weight:		3.615kg
Dimensions:		309mmx384.5mmx178mm

Services

If your V1-X needs servicing, follow these instructions.

Check our online Help Center at <http://support.iconproaudio.com>, for information, knowledge, and downloads such as:

1. FAQ
2. Download
3. Product Registration
4. Video Tutorials

Very often you will find solutions on these pages. If you don't find a solution, create a support ticket at our online Help Center at the link below, and our technical support team will assist you as soon as we can.

Navigate to <http://support.iconproaudio.com> and then sign in to submit a ticket. Once you have submitted an inquiry ticket, our support team will assist you to resolve the problem with your ICON Pro Audio device as soon as possible.

To send defective products for service:

1. Ensure the problem is not related to operation error or external system devices.
2. Keep this owner's manual. We don't need it to repair the unit.
3. Pack the unit in its original packaging including end card and box. This is very important. If you have lost the packaging, please make sure you have packed the unit properly. ICON is not responsible for any damage that occurs due to non-factory packing.
4. Ship to the ICON tech support center or the local return authorization. See our service centers and distributor service points at the link below:

If you are located in the **United States**

please visit our help centre - <https://support.iconproaudio.com> and submit a ticket to the technical support team.

If you are located in **Europe**, please email the support team and wait for a response before sending the product to:

Sound Service GmbH
European Headquarters
Moriz-Seeler-Straße3 D-12489 Berlin
Telephone: +49 (0)30 707 130-0
Fax: +49 (0)30 707 130-189
E-Mail: service@sound-service.eu

If you are located in **Hong Kong** please email the support team and wait for a response before sending the product to:

ASIA OFFICE:
Unit F, 15/F., Fu Cheung Centre,
No. 5-7 Wong Chuk Yueng Street, Fotan,
Sha Tin, N.T., Hong Kong.
Tel: (852) 2398 2286
Fax: (852) 2789 3947
Email: info.asia@icon-global.com

For additional update information please visit our website at: www.iconproaudio.com



天猫官方旗舰店



天猫店iconproaudio旗舰店

抖音号



抖音iCON艾肯

哔哩哔哩



B站iCONProAudio

微信公众号



微信号iCON-PRO

官方售后QQ



4006311312.114.qq.com

中国地区用户

Twitter



www.twitter.com/iconproaudio

Instagram



www.instagram.com/iconproaudio

Facebook



www.facebook.com/iconproaudio

Youtube



www.youtube.com/iconproaudio

Website



www.iconproaudio.com

Support



support.iconproaudio.com

Dashboard



iconproaudio.com/dashboard/

www.iconproaudio.com