

Slöer

STEREO AMBIENT REVERB



The Slöer Stereo Ambient Reverb allows players to create and save up to three presets with wide, lush, modulated, sleepy and ambient soundscapes. Stocked with five different algorithms specifically designed to invoke textures for bringing dreams from your subconscious to reality.

9 volt DC, Center Negative · 100mA min*

*The use of an isolated power supply is recommended for powering all Walrus Audio Pedals. Daisy chain power supplies are not recommended.

Got questions or need a repair?

Email help@walrusaudio.com to talk with a real live human about your Walrus gear!

This product comes with a limited lifetime warranty.

[Click Here](#) for more info.

Mono In / Mono Out

Use left input.
Use left output.

Mono In / Stereo Out

Use left input in.

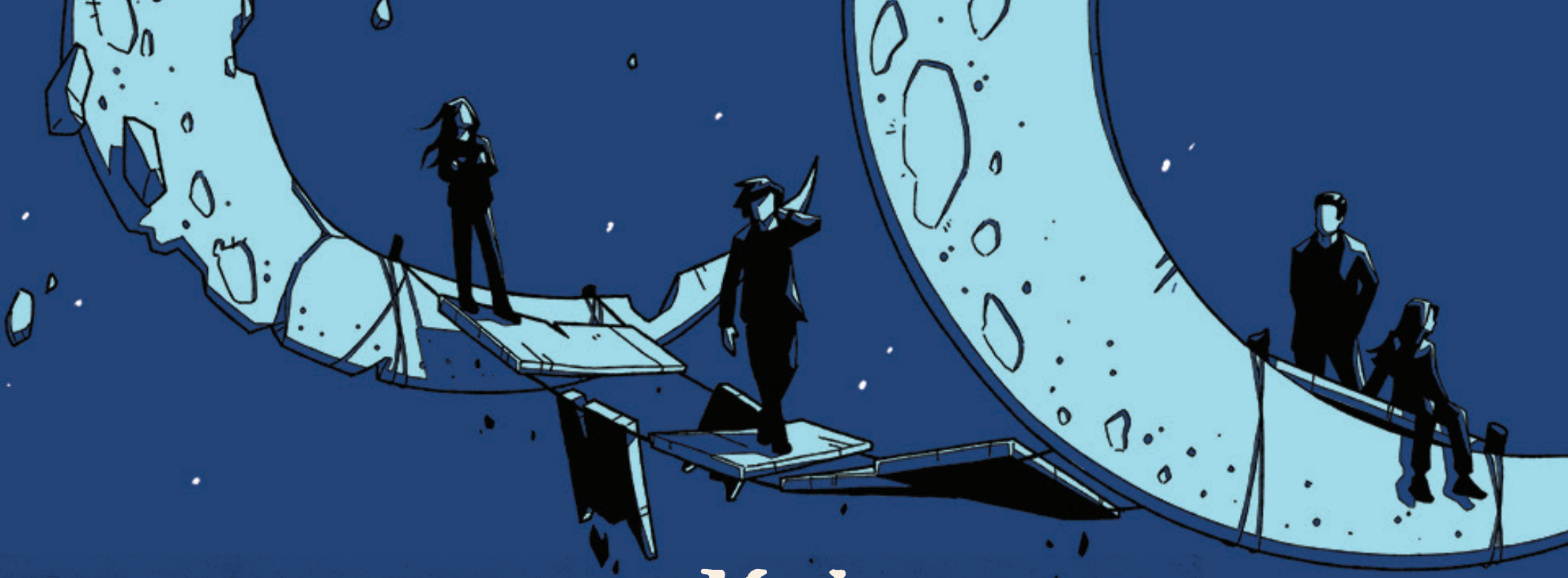
Left input will feed the same input signal to the right channel when using mono in.

Use left and right output.

Stereo In / Stereo Out

Use left and right input.
Use left and right output.





Modes

Use the rotary switch to select one of five onboard algorithms.

DREAM

Lush reverb with a latching pad function. Press the sustain switch to latch signal. Experiment with the X Fader to add vibrato over the pad. Press sustain again and pad will decrease according to where the decay knob is set.

LIGHT

Bright reverb with an octave up shimmer. Create ethereal sounds with the X Fader controlling how much shimmer is added to the reverb.

RAIN

Tappy and trippy, this program creates a unique effect with lower levels of diffusion allowing the reverb delay taps to audible create an echo like effect within your reverb. Use the X Fader to set the amount of diffusion of the delay taps, with lower X for more echo and higher X for a smoother sound.

DARK

Add a lower octave to your reverb trail. Create deep and wide atmospheric sounds and channel nightmarish soundscapes. The X Fader sets the level of a -1 octave signal that feeds the reverb.

RISE

Auto-swell reverb for beautiful cinematic swells. Don't rush it. Let it breathe and gently wake up. The X Fader sets the amount of time it takes the reverb to swell in after a note is played. Set lower for shorter rise times and higher for longer rise times.

Note: Rise works best in front of an amp, not through an FX loop.



Waveshapes

With the pedal engaged, hold down the bypass switch and use the mode knob to select the desired wave shape, and the depth knob to set the desired rate. The bypass LED will flash at the rate of modulation while in the secondary mode. The pedal remembers the wave shape and rate settings for the current preset when saved, until the next time they are modified. The pedal also maintains the algorithm and depth setting when modifying secondary functions.

SINE – Smooth and even pitch up and down modulation. A classic modulation sound.

WARP – Asymmetric pitch up modulation similar to a warped vinyl record.

SINK – Asymmetric pitch down modulation for sinking detune similar to a Bigsby tremolo arm.

SQUARE – Symmetric square wave pitch up and down modulation for stepped modulation. Hard edged transitions create unique modulation artifacts.

RANDOM – Randomized sample and hold style modulation.



Controls

Decay: Adjusts the length of the reverb decay. Go from tight short reverb, at full counter clockwise, to long drawn out texture at full clockwise.

Filter: Controls the tone of the reverb decay. Each algorithm includes a low-pass filter optimized for that unique sound and the knob controls the filter cutoff frequency. Turn the knob clockwise to open the filter for brighter tones, and counter clockwise to close the filter resulting in a darker tone.

Depth: Controls the amount of modulation applied to the reverb decay. Go from no modulation, to nightmare inducing pitch bending at high settings.

- **Secondary Function:** Rate - Press and hold Bypass and turn the Depth knob to control the speed of the modulation applied to the reverb decay. The Bypass LED will blink at the rate of the modulation while in secondary control mode.





Mix: Control the amount of wet/dry mix.

Fully left = dry.

Fully right = wet.

- **Secondary Function: Pan** - Press and hold bypass and turn the Mix knob to control left/right panning of wet reverb signal and dry mix. Turning the Mix knob counter clockwise to pan the wet signal to the left and clockwise to pan to the right. Putting the Mix knob back at 12 o'clock is centered with no panning. Range spans from subtle tilt to hard panned wet and dry signals.

Width: Control the width of the stereo field in the left and right channels. All the way down is the least stereo width, running the two channels as parallel mono. In the middle, the stereo diffusion starts to begin in the reverb algorithms and the sound spreads out further. At the top position of the toggle, the reverb is sending out unique signals and artifacts individually to the left and right channels with maximum stereo width to the left and right.



X: The X Fader changes jobs depending on which algorithm is selected.

DREAM – Sets the depth of vibrato applied to the reverb decay.

LIGHT – Sets the amount of +1 octave shimmer.

RAIN – Sets the diffusion of the audible delay taps.

DARK – Sets the level of a -1 octave signal that feeds the reverb.

RISE – Sets the amount of time it takes the reverb to swell in after a note is played. Set lower for shorter rise times and higher for longer rise times.

Stretch: Time stretch the reverb algorithm by lowering the sample rate* of the on-board DSP chip, lengthening reverb time, darkening tonality, and introducing unique sample-based artifacts.

* Sample rate is the frequency at which samples of incoming audio are passed through the system and at which DSP processes are updated.



Bypass Switch: Turns the effect on and off. It also features our smart bypass switching. When the switch is in the off position, press and hold to temporarily activate the effect to add a moment of reverb texture. Releasing the switch turns the effect off, and fades it out.

Sustain Switch: When pressed, the decay switch ramps up the reverb trail to maximum creating a long dreamy reverb trail, and then ramps back down to the decay knob setting when released. In the “Dream” algorithm, the sustain switch is latching. Press it once to capture and sustain the current reverb decay for extremely long pad-like sounds. Press it again to let the reverb trail taper off, based on the position of the decay knob.

Sustain LED: Indicates which preset has been selected, in the order of Red (preset 1), Green (preset 2), and Blue (preset 3). When a preset parameter is changed, the LED will turn purple indicating that a change has occurred. The Sustain LED will flash when the Sustain Switch is activated.



Trails Mode: The Slöer can run in trails or no trails mode. In trails mode, when you turn the pedal off, the reverb decay dies off naturally. In no trails mode, the decay is abruptly cut off when you turn the pedal off. To toggle between either mode, hold down the bypass switch for 1 second while applying power to the pedal. Unplug power and repeat to toggle to the other mode. Default is Trails mode.



Presets

Slöer has three on-board presets (Red, Green, Blue). If the same algorithm is used in the next preset, the reverb sound spill over into the saved settings.

Scroll through the presets by pressing both stomp switches at the same time. Each press of both stomp switches will load the next preset until you get back to red.

To save a preset:

1. Scroll to the preset color you want to save a new sound.
2. Using the knobs and switches, dial in the desired reverb sound. The preset LED will turn purple indicating the preset has been modified. The preset LED will go back to the preset color when you cross the current saved setting.
3. To save, hold down the Bypass and Sustain switches until the preset LED blinks. The preset is now saved and the LED will return to the preset color.

Factory Reset: To perform a factory reset, hold down both foot switches while plugging in power to the pedal. Hold both switches until the Preset LED starts to flash, then release both switches. The pedal will now be in Trails mode with the three default presets loaded in the Red, Green and Blue presets.

The default factory presets are as follows:

RED - Dream Mode // Sine Wave

GREEN - Rain Mode // Sine Wave

BLUE - Light Mode // Sine Wave

IN MONO (L) - 1/4 inch TS cable from guitar/previous effects pedal.

IN STEREO (R) - 1/4 inch TS cable from previous stereo effects pedal.

OUT MONO (L) - 1/4 inch TS cable to amplifier left channel.

OUT STEREO (R) - 1/4 inch TS cable to amplifier right channel.

9v Jack – 9-volt DC, Center Negative, 100mA min.

